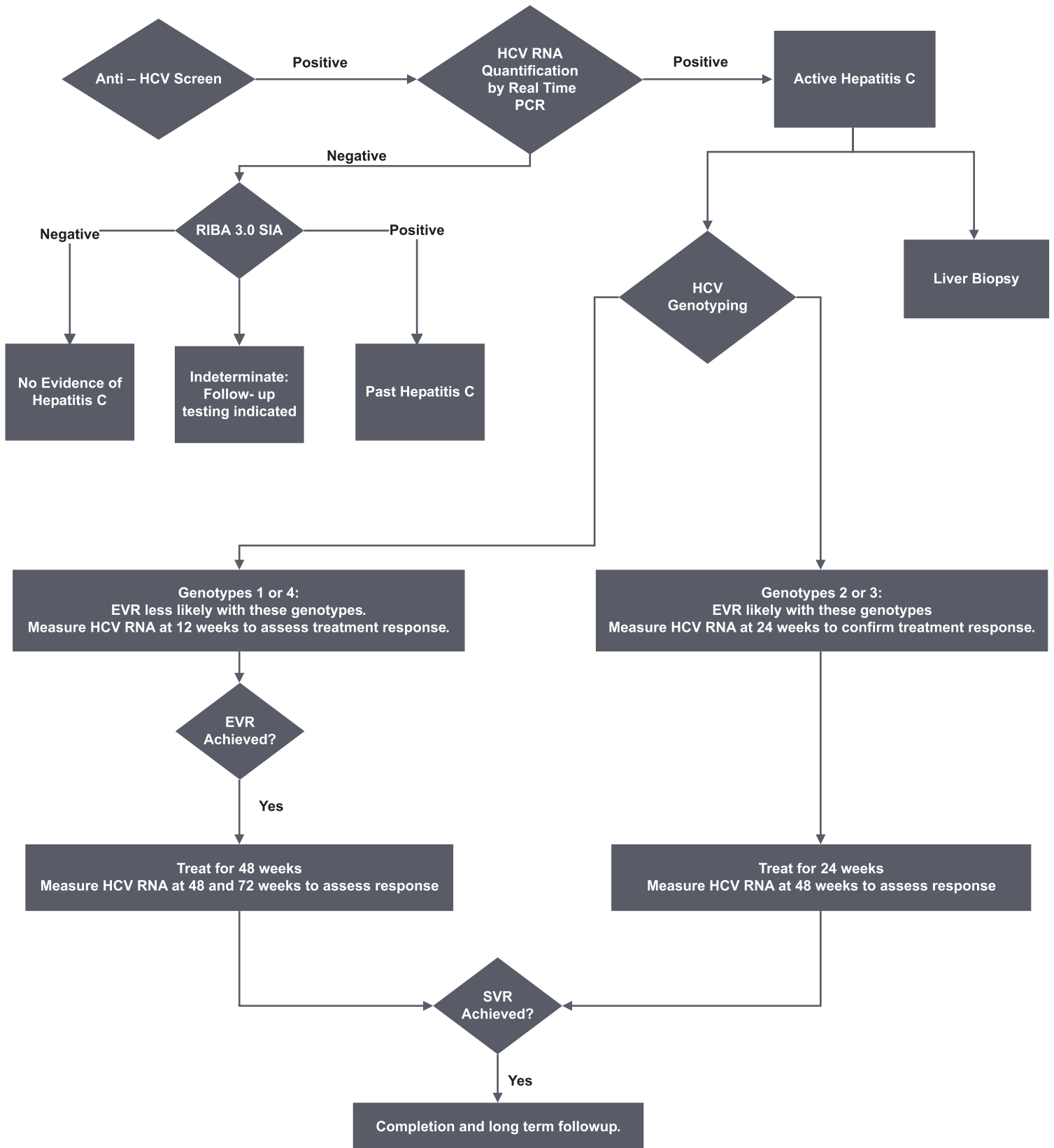


Hepatitis C Algorithm



DEFINITIONS:
 Early Viral Response (EVR) = > 2 log decrease in HCV RNA after 12 weeks of treatment.
 Sustained Viral Response (SVR) = undetectable HCV RNA 24 weeks after completion of treatment
 HCV Quantification by Real Time PCR = Sensitive enough to take the place of earlier quantitative and qualitative tests.