

ImmunoCAP[®] Specific IgE Testing

Objective Evidence Aids Diagnosis and Treatment Decisions



CLINICAL APPLICATION

ImmunoCAP[®] is a reliable assay for measuring allergen specific IgE, providing clinically relevant information to help healthcare providers differentiate allergy-like symptoms from true allergies. It also has an important role in the identification of allergy triggers in patients diagnosed with asthma. Accurate and sensitive specific IgE test results helps differentiate patients who can be managed in primary care from those requiring referral to specialists.

- **Primary Care** – ImmunoCAP can be a powerful tool for the primary care physician in evaluating patients who present with rhinitis, sinusitis or other allergic symptoms. When added to the traditional methods of history and physical exam, ImmunoCAP can add objective data on specific sensitivities for either drug therapy or allergen avoidance. ImmunoCAP also offers solid evidence to rule out allergy.
- **Asthma** – Asthma overlaps many medical specialties. Primary care physicians, allergy specialists and managed care organizations all have an interest in controlling the morbidity associated with the disease and controlling the costs of treatment. Asthma treatment guidelines from the NIH state that clinicians should “identify allergen exposures.” The use of ImmunoCAP, a well-standardized and reproducible blood assay, allows clinicians to meet this standard of care with relative ease.

CLINICAL BACKGROUND

Diseases with an allergic component represent a major public health problem in the United States, affecting as many as 40 to 50 million Americans.

- Allergic rhinitis affects between 10% and 30% of all adults and as many as 40% of children.
- 6.7% of adults and 8.5% of children have asthma; 60% and 90%, respectively, of those have allergy triggers.
- Food allergies affect approximately 6% of young children and 3 to 4% of adults in the U.S.

History and physical examination, when used alone without confirmatory testing, yield a correct diagnosis of allergic diseases only 50% of the time. Because allergy-like symptoms have a host of allergic and non-allergic etiologies, objective evidence has become increasingly important in primary care. With specific IgE blood test results, clinicians can make an assured differential diagnosis for patients with allergy-like symptoms. A reliable assay for measuring specific IgE supports the clinical diagnosis of allergy and helps guide the management of allergic diseases. Positive identification of allergens is essential before instituting environmental controls and helpful in selecting medication. Equally important, negative results avoid unnecessary, ineffective and costly treatment.

The American public is more aware of health issues and individuals are taking a more active role in their own health care. This activist mindset, coupled with heavy advertising for allergy-related drugs such as Claritin,[™] Allegra,[™] and Zyrtec,[™] has led patient/consumers to demand that their physicians prescribe allergy medication. A recent study, however, showed that only about 30% of patients who presented with upper respiratory symptoms and believed they were allergic, were actually suffering from allergies. “Test before you treat” was the theme of several articles in the national press on this subject. Specific allergen testing not only makes for good medical practice by prescribing anti-allergy drugs only for those patients who are allergic, but it could also help to reduce the cost of medical care.

Quick Facts

- Food allergen component testing helps assess risk for systemic allergic reactions.
- Up to 70% of patients being treated with allergy related drugs are not allergic.
- NIH recommends identifying allergen exposures for asthmatic patients. ImmunoCAP’s quantitative specific IgE testing identifies those allergy triggers.
- ImmunoCAP markedly improves clinical sensitivity and specificity of allergen specific IgE testing.
- We offer Respiratory Disease profiles specific to each region of the U.S., as well as a broad menu of additional panels and individual allergens.
- It is recommended that a total IgE be ordered when requesting a battery of allergens or respiratory disease profiles.

SELECTED REFERENCES

1. Airborne allergens: Something in the air. National Institute of Allergy and Infectious Diseases. NIH Publication No. 03-7045. 2003.
2. The Diagnosis and Management of Rhinitis: An Updated Practice Parameter. Joint Task Force on Practice Parameters. J Allergy Clin Immunol. 2008; 122: S1-S84.
3. Nathan RA. The burden of allergic rhinitis Allergy Asthma Proc 2007;28:3-9.
4. Homburger HA. Diagnosing allergic diseases in children. Arch Pathol Lab Med. 2004;128:1028-1031.

ImmunoCAP[®] Specific IgE Testing

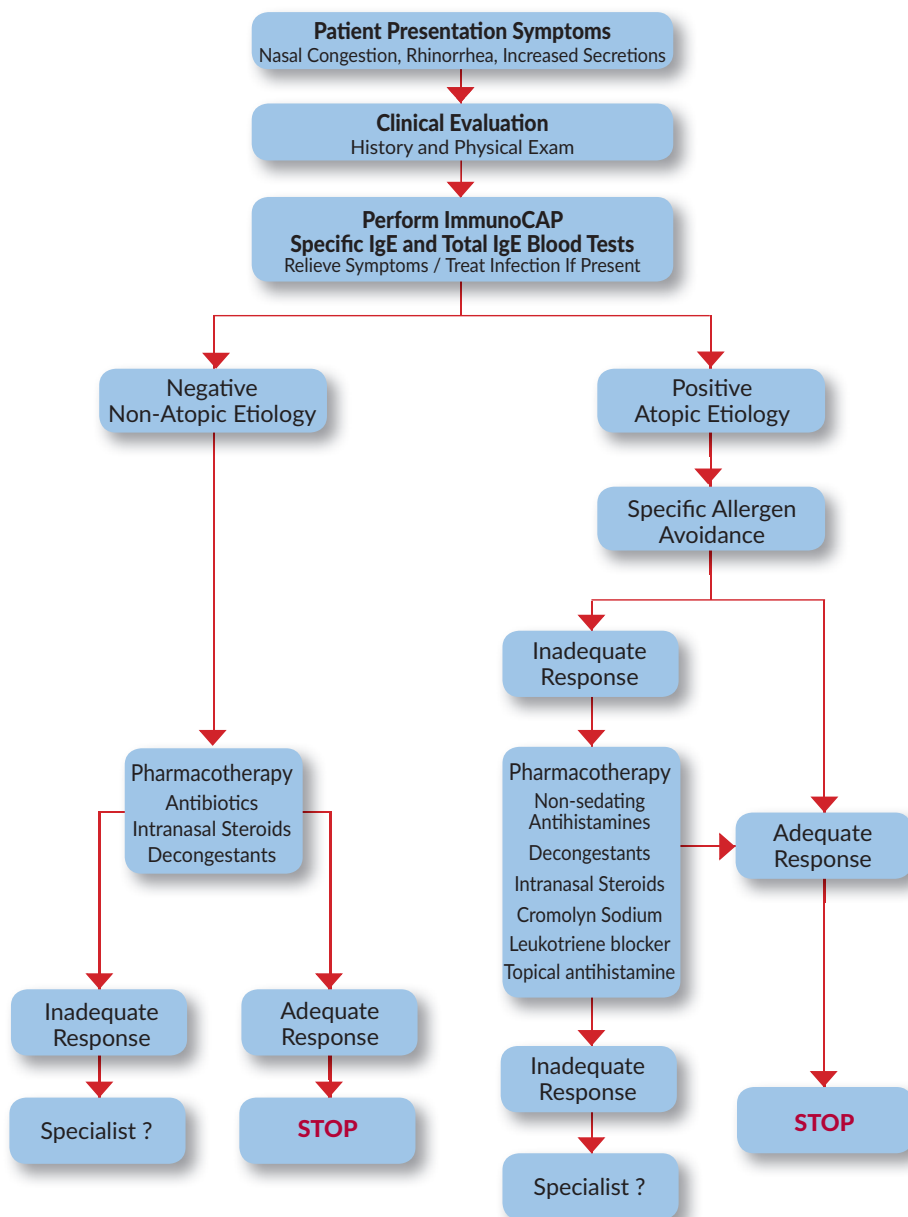
TECHNICAL INFORMATION

ImmunoCAP's solid phase fluorescence enzyme immunoassay (FEIA) technology uses monoclonal antibodies to provide improved sensitivity and improved reproducibility. Tests use calibrators tied directly to the World Health Organization Reference Preparation for IgE (75/502) to deliver truly quantitative measurements of IgE.

Quantitative results are reported with a range from <0.10 to >100. Correlated ASM classes from 0 – 6 are also included on the report. We offer Respiratory Disease Profiles specific for each region of the United States. These panels are aimed at ruling in or ruling out specific allergies as the cause of a patient's upper or lower respiratory disease symptoms. Additional panels, as well as a broad menu of individual allergens, are also available.

Please consult our Test Directory for a complete, up-to-date list of our offerings.

Upper Respiratory Disease Patient Management



SINGLE ALLERGEN <i>(See accompanying list for specific single allergens.)</i>	
DESCRIPTION	ALLERGEN, SINGLE
METHOD	FEIA
CPT CODE	86003
SPECIMEN REQUIREMENTS	0.5 mL serum (red-top tube) Separate serum from cells and put in separate plastic tube. Store and transport refrigerated.
COMMENTS	Minimum volume: 0.25 mL Stability: 24 hours at room temperature, 1 week refrigerated, 1 year frozen.
SCHEDULE	Monday – Friday
TURNAROUND	1-3 days
RANGES	LT 0.35 kU/L

ALLERGEN PROFILES <i>(See accompanying list for profiles & components.)</i>	
DESCRIPTION	ALLERGEN PROFILES
METHOD	FEIA
CPT CODE	86003 for each allergen
SPECIMEN REQUIREMENTS	Separate serum from cells and put in separate plastic tube. Store and transport refrigerated. (See individual batteries for volumes.)
COMMENTS	Stability: 24 hours at room temperature, 1 week refrigerated, 1 year frozen.
SCHEDULE	Monday – Friday
TURNAROUND	1-3 days
RANGES	LT 0.35 kU/L

IMMUNOGLOBULIN E, TOTAL (IGE)													
DESCRIPTION	IMMUNOGLOBULIN E, TOTAL (IGE)												
ORDER CODE	IGEC												
METHOD	FEIA												
CPT CODE	82785												
SPECIMEN REQUIREMENTS	1.0 mL serum (SST) Separate serum from cells and put in separate plastic tube. Store and transport refrigerated.												
COMMENTS	Stability: 8 hours at room temperature, 7 days refrigerated, 6 months frozen												
SCHEDULE	Monday – Friday												
TURNAROUND	1-3 days												
RANGES	<table border="1"> <thead> <tr> <th>IgE</th> <th>kU/L</th> </tr> </thead> <tbody> <tr> <td>0 - 11 mo</td> <td>1.4 - 52.3</td> </tr> <tr> <td>1 - 4 yrs</td> <td>0.4 - 351.6</td> </tr> <tr> <td>5 - 10 yrs</td> <td>0.5 - 393.0</td> </tr> <tr> <td>11 - 15 yrs</td> <td>1.9 - 170.0</td> </tr> <tr> <td>16+ yrs</td> <td>0.0 - 158.0</td> </tr> </tbody> </table> <p>Minimum detectable concentration is 2.0 kU/L</p>	IgE	kU/L	0 - 11 mo	1.4 - 52.3	1 - 4 yrs	0.4 - 351.6	5 - 10 yrs	0.5 - 393.0	11 - 15 yrs	1.9 - 170.0	16+ yrs	0.0 - 158.0
IgE	kU/L												
0 - 11 mo	1.4 - 52.3												
1 - 4 yrs	0.4 - 351.6												
5 - 10 yrs	0.5 - 393.0												
11 - 15 yrs	1.9 - 170.0												
16+ yrs	0.0 - 158.0												

SINGLE ALLERGENS

DRUGS

ICDAMO	Amoxicilloyl IgE
ICDAMP	Ampicilloyl IgE
ICDBG	Gelatin bovine IgE
ICDHI	Insulin, human IgE
ICDRP	Penicilloyl G IgE
ICDRPV	Penicilloyl V IgE

DUST MITES

ICDMBT	Blomia tropicalis (Mite), IgE
ICDM2	D. farinae (mite) IgE
ICDM1	D. pteronyssinus (mite) IgE

EPIDERMALS & ANIMAL PROTEINS

ICECE	Cat dander IgE
ICECF	Chicken feathers IgE
ICECD	Cow dander IgE
ICEDD	Dog dander IgE
ICEDF	Duck feathers IgE
ICEGF	Goose feathers IgE
ICEGPE	Guinea pig epithelium IgE
ICEHE	Hamster epithelium IgE
ICEHH	Horse dander IgE
ICEMOU	Mouse (Epithelium, Serum & Urine Proteins), IgE
ICERE	Rabbit Epithelium IgE
ICERAT	Rat (Epithelium, Serum & Urine Proteins), IgE
ICETF	Turkey Feathers, IgE

FOOD

ICFAL	Almond IgE
ICFALA	Alpha-Lactalbumin IgE
ICFAP	Apple IgE
ICFAPR	Apricot IgE
ICFAVO	Avacado IgE
ICFBN	Banana IgE
ICFBA	Barley IgE
ICFBF	Beef IgE
ICFBPP	Bell Pepper/ Paprika IgE
ICFBLA	Beta-lactoglobulin IgE
ICFBP	Black pepper IgE
ICFBM	Blue Mussel IgE
ICFBZ	Brazil Nut IgE
ICFBR	Broccoli IgE
ICFBW	Buckwheat IgE
ICFCAB	Cabbage IgE
ICFCA	Carrot IgE
ICFCS	Casein IgE
ICFCW	Cashew nut IgE
ICFCEL	Celery IgE
ICFCC	Cheese, cheddar type IgE
ICFMC	Cheese, mold type IgE
ICFCH	Cherry IgE
ICFCK	Chicken meat IgE
ICFCH	Chocolate/cacao IgE
ICFCL	Clam IgE
ICFCOC	Coconut IgE
ICFCD	Codfish (whitefish) IgE
ICFCN	Corn (maize) IgE
ICFCM	Cow's' milk IgE
ICFCR	Crab IgE
ICFCUC	Cucumber IgE
ICFEG	Egg (whole) IgE
ICFEW	Egg white IgE
ICFEY	Egg yolk IgE
ICFGA	Garlic IgE
ICFGT	Gluten IgE
ICFGR	Grape (raisin) IgE
ICFGF	Grapefruit IgE
ICFHZ	Hazel nut (filbert) IgE
ICFWM	Honeydew/Cantaloupe IgE

SINGLE ALLERGENS

ICFKIW	Kiwi IgE
ICFLAM	Lamb (mutton) IgE
ICFLEM	Lemon IgE
ICFLEN	Lentil IgE
ICFLE	Lettuce IgE
ICFLB	Lobster IgE
ICFML	Malt IgE
ICFMAN	Mango IgE
ICFMS	Mustard IgE
ICFOT	Oat IgE
ICFOCT	Octopus IgE
ICFON	Onion IgE
ICFOG	Orange IgE
ICFOVA	Ovalbumin IgE
ICFOVO	Ovomucoid IgE
ICFOY	Oyster IgE
ICFPAR	Parsley IgE
ICFGP	Pea, green IgE
ICFPCH	Peach IgE
ICFPN	Peanut IgE
ICFPR	Pear IgE
ICFPE	Pecan nut IgE
ICFPA	Pineapple IgE
ICFPIS	Pistachio IgE
ICFPML	Plum IgE
ICFPK	Pork IgE
ICFPT	Potato (white) IgE
ICFPUM	Pumpkin, IgE
ICFRAB	Rabbit, IgE
ICFRC	Rice IgE
ICFRY	Rye IgE
ICFSA	Salmon IgE
ICFSC	Scallop IgE
ICFSS	Sesame Seed IgE
ICFSH	Shrimp IgE
ICFSB	Soybean IgE
ICFSP	Spinach IgE
ICFPSQ	Squid (pacific) IgE
ICFST	Strawberry IgE
ICFSWP	Sweet Potato IgE
ICFTM	Tomato IgE
ICFTF	Trout IgE
ICFTU	Tuna IgE
ICFTR	Turkey meat IgE
ICFWL	Walnut IgE
ICFWT	Wheat IgE
ICFWB	White/navy bean IgE
ICFBY	Yeast (bakers' or brewers') IgE

GRASSES

ICGBA	Bahia Grass, IgE
ICGCB	Barley cultivated IgE
ICGBG	Bentgrass IgE
ICGBM	Bermuda grass IgE
ICGBR	Brome grass IgE
ICGCC	Corn cultivated IgE
ICGJO	Johnson grass IgE
ICGKB	Meadow (Kentucky blue) grass IgE
ICGMF	Meadow fescue IgE
ICGCO	Oat cultivated IgE
ICGOG	Orchard grass (Cocksfoot) IgE
ICGPR	Perennial rye grass IgE
ICGSV	Sweet vernal grass IgE
ICGTM	Timothy grass IgE
ICGCW	Wheat cultivated IgE

HOUSE DUST

ICHDG	House dust (Greer) IgE
ICHDS	House dust (Hollister-Steir) IgE

INSECTS & VENOM

ICIBB	Berlin Beetle IgE
--------------	-------------------

SINGLE ALLERGENS

ICIBW	Blood Worm IgE
ICICR	Cockroach IgE
ICIEH	European hornet IgE
ICIFA	Fireant IgE
ICIGN	Green nimitti IgE
ICIH	Honeybee venom IgE
ICIMO	Mosquito IgE
ICIPW	Paper wasp venom IgE
ICIWF	White-faced hornet venom IgE
ICIYJ	Yellow jacket venom IgE
ICIYF	Yellow-faced hornet venom IgE

MOLDS

ICMCP	Acremonium kiliense IgE
ICMAL	Alternaria tenuis (alternata) IgE
ICMAF	Aspergillus fumigatus IgE
ICMAN	Aspergillus niger IgE
ICMPU	Aureobasidium pullulans (Pullularia) IgE
ICMBC	Botrytis cinerea IgE
ICMCA	Candida albicans IgE
ICMCH	Cladosporium herbarum IgE
ICMCL	Curvularia lunata IgE
ICMEP	Epicoccum purpurascens/nigrum IgE
ICMFP	Fusarium proliferatum/moniliforme IgE
ICMHL	Setomelanomma rostrata (H. halodes)
ICMMR	Mucor racemosus (notatum) IgE
ICMPN	Penicillium chrysogenum (notatum) IgE
ICMPB	Phoma batae IgE
ICMPOR	Pityrosporum orbiculare IgE
ICMRN	Rhizopus nigricans IgE
ICMSH	Stemphylium herbarum/botryosum IgE
ICMTV	Trichoderma viride IgE
ICMTR	Trichophyton rubrum IgE

OCCUPATIONAL ALLERGENS

ICOEO	Ethlene oxide IgE
ICOLT	Latex IgE
ICOSI	Silk IgE
ICOSUN	Sunflower seed - occupational

TREES

ICTAC	Acacia tree IgE
ICTAB	American Beech tree IgE
ICTAP	Australian Pine Tree, IgE
ICTBE	Box elder IgE
ICTBR	Common Silver Birch tree IgE
ICTCW	Cottonwood IgE
ICTEL	Elm tree IgE
ICTEU	Eucalyptus (Gum) tree IgE
ICTAL	Grey alder tree IgE
ICTHZ	Hazel nut tree IgE
ICTRW	Japanese cedar IgE
ICTLIN	Linden Tree, IgE
ICTMC	Mountain cedar (Juniper) tree IgE
ICTML	Mulberry tree IgE
ICTOK	Oak tree IgE
ICTOL	Olive tree IgE
ICTPE	Pecan (White hickory) tree IgE
ICTSY	Sycamore tree IgE
ICTWL	Walnut tree IgE
ICTWA	White Ash tree IgE
ICTWP	White pine tree IgE
ICTWI	Willow tree IgE

WEEDS

ICWCB	Cocklebur IgE
ICWEP	English plantain (Ribwort) IgE
ICWFR	False ragweed IgE
ICWGR	Giant ragweed IgE
ICWGD	Goldenrod IgE
ICWKO	Kochia (Firebush) IgE
ICWLQ	Lamb's quarters (Goosefoot) IgE

CONTINUED

SINGLE ALLERGENS

ICWMW	Mugwort IgE
ICWNT	Nettle IgE
ICWPG	Pigweed IgE
ICWWP	Wall pellitory (p.officinalis) IgE

GENERAL ALLERGEN PROFILES

GRASS9

GRASS ALLERGEN PROFILE 9

VOLUME 1.5 mL
MINIMUM .75 mL
Redtop bentgrass IgE
Bermuda grass IgE
Brome grass IgE
Meadow Kentucky blue grass IgE
Meadow fescue IgE
Orchard grass IgE
Perennial rye grass IgE
Sweet vernal grass IgE
Timothy grass IgE
English plantain (Ribwort) IgE
Lamb's quarters (Goosefoot) IgE

MOLD5

MOLD ALLERGEN PROFILE 5

VOLUME .75 mL
MINIMUM .5 mL
Alternaria tenuis IgE
Aspergillus fumigatus IgE
Candida albicans IgE
Cladosporium herbarum IgE
Penicillium chrysogenum IgE

TREE11

TREE ALLERGEN PROFILE 11

VOLUME 1.5 mL
MINIMUM .75 mL
Box elder tree IgE
Grey alder tree IgE
Common silver birch tree IgE
Cottonwood tree IgE
Elm tree IgE
Hazelnut tree IgE
Mountain cedar (Juniper) IgE
Mulberry tree IgE
Oak tree IgE
Olive tree IgE
Walnut tree IgE

WEED12

WEED ALLERGEN PROFILE 12

VOLUME 1.5 mL
MINIMUM .75 mL
Cocklebur IgE
English plantain (Ribwort) IgE
Kochia (Firebush) IgE
Lamb's quarters (Goosefoot) IgE
Rough marsh elder IgE
Mugwort IgE
Nettle IgE
Short (common) ragweed IgE
Russian thistle (Saltwort) IgE
Scale (Lenscale) IgE
Sheep sorrel (Yellow dock) IgE
Pigweed IgE

IDM4

DUST/MITE ALLERGEN PROFILE 4

VOLUME 1 mL
MINIMUM 0.5 mL
D. pteronyssinus (mite) IgE
D. farinae (mite) IgE

GENERAL ALLERGEN PROFILES

Cockroach IgE
House dust (Hollister Stier) IgE

IROD

RODENT ALLERGEN PROFILE

VOLUME 1.5 mL
MINIMUM 1.0 mL
Guinea Pig Epithelium IgE
Hamster Epithelium IgE
Mouse Epithelium (Serum & Urine Proteins) IgE
Rat Epithelium (Serum & Urine Proteins) IgE

VENOM5

HYMENOPTERA VENOM PROFILE

VOLUME .75 mL
MINIMUM .5 mL
Honeybee venom IgE
Paper wasp venom IgE
White-faced hornet venom IgE
Yellow-faced hornet venom IgE
Yellow jacket venom IgE

CHLD15

CHILDHOOD ALLERGEN PROFILE 15

VOLUME 3 mL
MINIMUM 1.5 mL
D. pteronyssinus (mite) IgE
D. farinae (mite) IgE
Cat Dander IgE
Dog Dander IgE
Codfish IgE
Egg White IgE
Cow's Milk IgE
Peanut IgE
Shrimp IgE
Soybean IgE
Walnut IgE
Cockroach IgE
Alternaria tenuis IgE
Cladosporium herbarum IgE

CHD15R

CHILDHOOD ALLERGY 15 RFLX

VOLUME 4 mL
MINIMUM 3 mL
If sensitization occurs for milk, egg white or peanut in the CHLD15, then component testing for the allergen(s) will be performed.

PEDS11

PEDIATRIC ALLERGY PROFILE 11

VOLUME 1.5 mL
MINIMUM 1 mL
D. farinae (mite) IgE
Cat dander IgE
Dog dander IgE
Cow's' milk IgE
Peanut IgE
Codfish (Whitefish) IgE
Egg white IgE
Wheat IgE
Soybean IgE
Cockroach IgE
Alternaria tenuis (alternata) IgE

PEDMAR

PEDIATRIC MARCH PROFILE

VOLUME 3 mL
MINIMUM 1.5 mL
Immunoglobulin E
Cow's milk IgE
Codfish (Whitefish) IgE

GENERAL ALLERGEN PROFILES

Wheat IgE
Cockroach IgE
A. tenuis IgE
D. pteronyssinus (Mite) IgE
D. farinae (Mite) IgE
Cat Dander IgE
Dog dander IgE
Egg White IgE
Peanut IgE
Soybean IgE

IFCOMP

INHALANTS/FOOD PANEL

VOLUME 4 mL
MINIMUM 2 mL
Cow's milk IgE
Wheat IgE
Rye IgE
Bermuda Grass IgE
Orchard grass (Cocksfoot) IgE
Timothy Grass IgE
Meadow (Ktky Blue) Grass IgE
House Dust (Greer) IgE
P. chrysogenum IgE
A. fumigatus IgE
A. tenuis IgE
Maple Leaf Sycamore Tree IgE
Oak Tree IgE
Elm Tree IgE
Olive Tree IgE
Russian Thistle IgE
Pigweed IgE
Western Ragweed IgE
Wormwood (Sagebrush) IgE
Bentgrass Redtop IgE
False Ragweed IgE
Chicken Feathers IgE
Duck Feathers IgE
Turkey Feathers IgE
Cat Dander IgE
Horse Dander IgE
Cow dander IgE
Dog dander IgE
Goose Feathers IgE
Egg White IgE
Peanut IgE
Soybean IgE

ISCRN9

INHALANT ALLERGEN SCREEN 9

VOLUME 1.5 mL
MINIMUM .75 mL
D. farinae (mite) IgE
Cat dander IgE
Dog dander IgE
Perennial rye grass IgE
Alternaria tenuis IgE
Elm tree IgE
Olive tree IgE
English plantain (Ribwort) IgE
Short (Common) ragweed IgE

ISCN31

ALLERGENS SCREEN 31

VOLUME 4 mL
MINIMUM 2 mL
D. farinae (mite) IgE
D. pteronyssinus (mite) IgE
Cat dander IgE
Dog dander IgE
Goose feathers IgE
Horse dander IgE

GENERAL ALLERGEN PROFILES

Bermuda grass IgE
Johnson grass IgE
Perennial rye grass IgE
Timothy grass IgE
Aspergillus fumigatus IgE
Alternaria tenuis (alternata) IgE
Cladosporium herbarum IgE
Acremonium kiliense IgE
Setomelanomma rostrata IgE
Penicillium chrysogenum IgE
Acacia tree IgE
Elm tree IgE
Eucalyptus (Gum) tree IgE
Mulberry tree IgE
Oak tree IgE
Olive tree IgE
Maple leaf sycamore tree IgE
Walnut tree IgE
English plantain (Ribwort) IgE
Lamb's quarters (Goosefoot) IgE
Mugwort IgE
Pigweed IgE
Russian thistle (Saltwort) IgE
Sheep sorrel (Yellow dock) IgE
Western ragweed IgE

FOOD ALLERGEN PANELS

ADFP15

ADULT COMMON FOOD PROFILE

VOLUME 2 mL
MINIMUM 1.5 mL
Almond IgE
Cashew IgE
Cod Fish IgE
Egg White IgE
Hazelnut IgE
Cow's Milk IgE
Peanut IgE
Salmon IgE
Scallop IgE
Sesame IgE
Shrimp IgE
Soybean IgE
Tuna IgE
Walnut IgE
Wheat IgE

ADF15R

ADULT COMMON FOOD RFLX

If sensitization occurs for egg white, cow's milk, or peanut in ADFP15, then component testing for the allergen(s) will be performed.

ADFP35

ADULT COMP FOOD PROFILE

VOLUME 4 mL
MINIMUM 3 mL
Almond IgE
Barley IgE
Beef IgE
Bell Pepper IgE
Cocoa (Chocolate) IgE
Carrot IgE
Cashew IgE
Chicken IgE
Cod Fish IgE
Crab IgE
Egg White IgE
Garlic IgE
Hazelnut IgE
Lettuce IgE
Cow's Milk IgE

FOOD ALLERGEN PANELS

Mustard IgE
Oat IgE
Orange IgE
Pea IgE
Peanut IgE
Pork IgE
Potato IgE
Rice IgE
Rye IgE
Salmon IgE
Scallop IgE
Sesame IgE
Shrimp IgE
Soybean IgE
Tomato IgE
Tuna IgE
Walnut IgE
Wheat IgE
White/Navy Bean IgE
Yeast (Bakers/Brewers) IgE

ADF35R

ADULT COMP FOOD RFLX

If sensitization occurs for egg white, cow's milk, or peanut in ADFP35, then component testing for the allergen(s) will be performed.

PDFP10

PEDIATRIC COMMON FOOD PROFILE

VOLUME 2 mL
MINIMUM 1 mL
Egg white IgE
Cow's milk IgE
Codfish (whitefish) IgE
Wheat IgE
Peanut IgE
Scallop IgE
Sesame IgE
Soybean IgE
Shrimp IgE
Walnut IgE

PDF10R

PEDIATRIC COMMON FOOD RFLX

If sensitization occurs for egg white, cow's milk, or peanut in PDFP10, then component testing for the allergen(s) will be performed.

PDFP29

PEDIATRIC COMP FOOD PROFILE

VOLUME 3 mL
MINIMUM 2 mL
Almond IgE
Apple IgE
Banana IgE
Barley IgE
Cocoa (Chocolate) IgE
Cashew IgE
Chicken IgE
Cod Fish IgE
Egg White IgE
Hazelnut IgE
Cow's Milk IgE
Oat IgE
Orange IgE
Pea IgE
Peanut IgE
Pork IgE
Potato IgE
Rice IgE
Rye IgE
Scallop IgE
Sesame IgE

FOOD ALLERGEN PANELS

Shrimp IgE
Soybean IgE
Strawberry IgE
Tomato IgE
Walnut IgE
Wheat IgE
White/Navy Bean IgE
Yeast (Bakers/Brewers) IgE

PDF29R

PEDIATRIC COMPREHENSIVE FOODS REFLEX

If sensitization occurs for cow's milk, egg white or peanut in PDFP29, then component testing for the allergen(s) will be performed.

NUT6

NUT ALLERGEN PROFILE 6

VOLUME 1 mL
MINIMUM .75 mL
Almond IgE
Cashew IgE
Hazelnut IgE
Pecan IgE
Peanut IgE
Walnut IgE

SEAFD7

SEAFOOD ALLERGEN PROFILE 7

VOLUME 1 mL
MINIMUM .75 mL
Codfish (whitefish) IgE
Clam IgE
Crab IgE
Lobster IgE
Salmon IgE
Shrimp IgE
Tuna IgE

SHELL9

SHELLFISH ALLERGEN PROFILE

VOLUME 3 mL
MINIMUM 1.5 mL
Blue Mussel IgE
Clam IgE
Crab IgE
Lobster IgE
Octopus IgE
Oyster IgE
Scallop IgE
Shrimp IgE
Squid (Pacific) IgE

EGGWCP

EGG WHITE WITH COMPONENTS

VOLUME 2 mL
MINIMUM 1 mL
Egg White IgE
Egg White Component Panel
Ovalbumin IgE
Ovomucoid IgE

EGGWR

EGG WHITE RFLX TO COMPONENTS

If sensitization occurs for egg white in EGGWCP, then component testing for the allergen(s) will be performed.

MILKCP

MILK IGE WITH COMPONENTS

VOLUME 2 mL
MINIMUM 1.5 mL
Cow's Milk IgE
Milk Component Panel

FOOD ALLERGEN PANELS

Alpha-Lactalbumin IgE
Beta-Lactoglobulin IgE
Casein IgE

MILKR

MILK IGE RFLX TO COMPONENTS

If sensitization occurs for cow's milk in MILKCP, then component testing for the allergen(s) will be performed.

PNTCOM

PEANUT WHOLE WITH COMPONENTS

VOLUME 3 mL
MINIMUM 2 mL
Peanut IgE
Peanut Component Panel

Ara h1
Ara h2
Ara h3
Ara h9
Ara h8

PNTCMR

PEANUT RFLX TO COMPONENTS

If sensitization occurs for peanut in PNTCOM, then component testing for the allergen(s) will be performed.

REGIONAL RESPIRATORY PROFILES

RDPNA

REGION 1

NORTH ATLANTIC STATES (CT, MA, NJ, NY, PA, VT, ME, NH, RI)

VOLUME 3 MI
MINIMUM 1.5 mL
D. pteronyssinus (mite) IgE
D. farinae (mite) IgE
Cat dander IgE
Dog dander IgE
Bermuda grass IgE
Timothy grass IgE
Cockroach IgE
Penicillium chrysogenum/notatum IgE
Cladosporium herbarum IgE
Aspergillus fumigatus IgE
Alternaria tenuis IgE
Box Elder tree IgE
Common Silver Birch IgE
Cottonwood tree IgE
Elm tree IgE
Maple leaf sycamore IgE
Mountain cedar (juniper) IgE
Mulberry tree IgE
Oak tree IgE
Walnut tree IgE
White ash tree IgE
Short (common) ragweed IgE
Mugwort IgE
Pigweed IgE
Sheep Sorrel (yellow dock) IgE

RDPMA

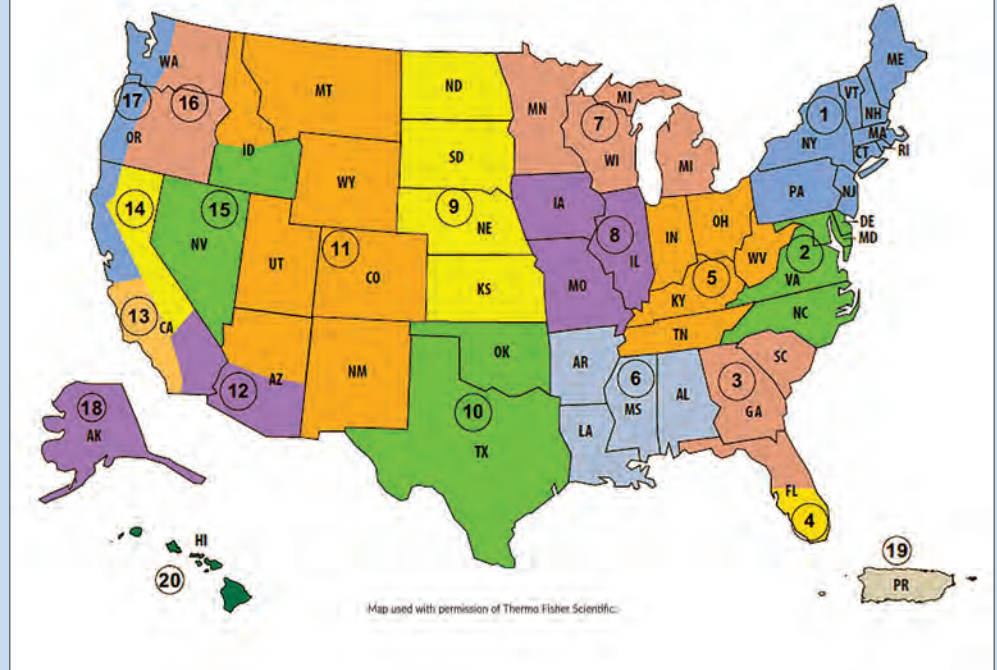
REGION 2

MID-ATLANTIC STATES (DE, MD, VA, DC, NC)

VOLUME 3 MI
MINIMUM 1.5 mL
D. pteronyssinus (mite) IgE
D. farinae (mite) IgE
Cat dander IgE
Dog dander IgE

REGIONAL RESPIRATORY PROFILES

REGIONAL ALLERGY RESPIRATORY AREAS



Bermuda grass IgE
Timothy grass IgE
Johnson grass IgE
Cockroach IgE
Penicillium chrysogenum/notatum IgE
Cladosporium herbarum IgE
Aspergillus fumigatus IgE
Alternaria tenuis IgE
Box Elder tree IgE
Common Silver Birch IgE
Cottonwood tree IgE
Elm tree IgE
Mountain cedar (juniper) IgE
Mulberry tree IgE
Oak tree IgE
Pecan (white hickory) tree IgE
Short (common) ragweed IgE
Pigweed IgE
Sheep Sorrel (yellow dock) IgE

RDPSA

REGION 3

SOUTH ATLANTIC STATES (GA, SC, Northern Florida)

VOLUME 3 MI
MINIMUM 1.5 mL
D. pteronyssinus (mite) IgE
D. farinae (mite) IgE
Cat dander IgE
Dog dander IgE
Bermudagrass IgE
Bahigrass IgE
Timothygrass IgE
Cockroach IgE
Penicillium chrysogenum/notatum IgE
Cladosporium herbarum IgE
Aspergillus fumigatus IgE
Alternaria tenuis/alternata IgE
Boxelder (maple) tree IgE
Common silver birch tree IgE
Elm tree IgE
Mountain cedar (juniper) tree IgE
Oak tree IgE

Pecan (white hickory) tree IgE
Short (common) ragweed IgE
Pigweed IgE
Sheep sorrel IgE
Nettle IgE

RDPNFL

REGION 4

NEW FLORIDA (FL [S. of Orlando])

VOLUME 3 MI
MINIMUM 1.5 mL
D. pteronyssinus (mite), IgE
D. farinae (mite), IgE
Blomia tropicalis (mite), IgE
Cat dander, IgE
Dog dander, IgE
Bermuda grass, IgE
Bahia grass, IgE
Timothy grass, IgE
Cockroach, IgE
Penicillium chrysogenum/notatum, IgE
Cladosporium herbarum, IgE
Aspergillus fumigatus, IgE
Alternaria tenuis/alternata, IgE
Australian pine tree, IgE
Box elder (maple) tree, IgE
Elm tree, IgE
Mountain cedar (juniper) tree, IgE
Oak tree, IgE
Short (common) ragweed, IgE
Pigweed, IgE
Sheep sorrel, IgE
Nettle, IgE

RDPGOV

REGION 5,

GREATER OHIO VALLEY (OH, TN, WV, KY)

VOLUME 3 MI
MINIMUM 1.5 mL
D. pteronyssinus (mite) IgE
D. farinae (mite) IgE
Cat dander IgE

CONTINUED

REGIONAL RESPIRATORY PROFILES

Dog dander IgE
Bermuda grass IgE
Timothy grass IgE
Cockroach IgE
Penicillium chrysogenum/notatum IgE
Cladosporium herbarum IgE
Aspergillus fumigatus IgE
Alternaria tenuis IgE
Box Elder tree IgE
Common Silver Birch IgE
Cottonwood tree IgE
Elm tree IgE
Maple leaf sycamore IgE
Mountain cedar (juniper) IgE
Mulberry tree IgE
Oak tree IgE
Pecan (white hickory) tree IgE
Walnut tree IgE
White ash tree IgE
Short (common) ragweed IgE
Russian thistle, IgE
Pigweed IgE
Sheep sorrel (yellow dock) IgE

RDPSC REGION 6 SOUTH CENTRAL STATES (AL, AR, LA, MS)

VOLUME 3 MI
MINIMUM 1.5 mL

D. pteronyssinus (mite) IgE
D. farinae (mite) IgE
Cat dander IgE
Dog dander IgE
Bermuda grass IgE
Timothy grass IgE
Cockroach IgE
Penicillium chrysogenum/notatum IgE
Cladosporium herbarum IgE
Aspergillus fumigatus IgE
Alternaria tenuis IgE
Box Elder tree IgE
Common Silver Birch IgE
Elm tree IgE
Mountain cedar (juniper) IgE
Mulberry tree IgE
Oak tree IgE
Pecan (white hickory) tree IgE
Walnut tree IgE
Short (common) ragweed IgE
Pigweed IgE
Rough marsh elder IgE

RDPNMW REGION 7 NORTHERN MIDWEST STATES (MI, WI, MN)

VOLUME 3 MI
MINIMUM 1.5 mL

D. pteronyssinus (mite) IgE
D. farinae (mite) IgE
Cat dander IgE
Dog dander IgE
Bermuda grass IgE
Timothy grass IgE
Cockroach IgE
Penicillium chrysogenum/notatum IgE
Cladosporium herbarum IgE
Aspergillus fumigatus IgE
Alternaria tenuis IgE
Box Elder tree IgE
Common Silver Birch IgE
Cottonwood tree IgE

REGIONAL RESPIRATORY PROFILES

Elm tree IgE
Mountain cedar (juniper) IgE
Mulberry tree IgE
Oak tree IgE
White ash tree IgE
Short (common) ragweed IgE
Russian thistle, IgE
Rough marsh elder IgE
Nettle IgE

RDPCMW REGION 8 CENTRAL MIDWEST STATES (IL, MO, IA)

VOLUME 3 MI
MINIMUM 1.5 mL

D. pteronyssinus (mite) IgE
D. farinae (mite) IgE
Cat dander IgE
Dog dander IgE
Bermuda grass IgE
Timothy grass IgE
Cockroach IgE
Penicillium chrysogenum/notatum IgE
Cladosporium herbarum IgE
Aspergillus fumigatus IgE
Alternaria tenuis IgE
Box Elder tree IgE
Cottonwood tree IgE
Elm tree IgE
Maple leaf sycamore IgE
Mountain cedar (juniper) IgE
Mulberry tree IgE
Oak tree IgE
Pecan (white hickory) tree IgE
Walnut tree IgE
Short (common) ragweed IgE
Russian thistle, IgE
Pigweed IgE
Rough marsh elder IgE
White ash tree IgE

RDPGP REGION 9 GREAT PLAINS STATES (KS, NE, ND, SD)

VOLUME 3 MI
MINIMUM 1.5 mL

D. pteronyssinus (mite) IgE
D. farinae (mite) IgE
Cat dander IgE
Dog dander IgE
Bermuda grass IgE
Timothy grass IgE
Cockroach IgE
Penicillium chrysogenum/notatum IgE
Cladosporium herbarum IgE
Aspergillus fumigatus IgE
Alternaria tenuis IgE
Box Elder tree IgE
Cottonwood tree IgE
Elm tree IgE
Mountain cedar (juniper) IgE
Mulberry tree IgE
Oak tree IgE
White ash tree IgE
Short (common) ragweed IgE
Russian thistle, IgE
Sheep Sorrel (yellow dock) IgE
Nettle IgE

REGIONAL RESPIRATORY PROFILES

RDPSWG REGION 10 SOUTHWESTERN GRASSLAND STATES (TX, OK)

VOLUME 3 MI

MINIMUM 1.5 mL

D. pteronyssinus (mite) IgE
D. farinae (mite) IgE
Cat dander IgE
Dog dander IgE
Bermuda grass IgE
Timothy grass IgE
Cockroach IgE
Penicillium chrysogenum/notatum IgE
Cladosporium herbarum IgE
Aspergillus fumigatus IgE
Alternaria tenuis IgE
Box Elder tree IgE
Common Silver Birch IgE
Cottonwood tree IgE
Elm tree IgE
Mountain cedar (juniper) IgE
Mulberry tree IgE
Oak tree IgE
Pecan (white hickory) tree IgE
White ash tree IgE
Short (common) ragweed IgE
Pigweed IgE
Rough marsh elder
Sheep sorrel (yellow dock) IgE
Nettle IgE

R DPRM REGION 11 ROCKY MOUNTAIN STATES (AZ [Mtn], ID [Mtn], NM, WY, CO, UT [Mtn], MT)

VOLUME 3 MI

MINIMUM 1.5 mL

D. pteronyssinus (mite) IgE
D. farinae (mite) IgE
Cat dander IgE
Dog dander IgE
Bermuda grass IgE
Timothy grass IgE
Cockroach IgE
Penicillium chrysogenum/notatum IgE
Cladosporium herbarum IgE
Aspergillus fumigatus IgE
Alternaria tenuis IgE
Grey alder IgE
Box Elder tree IgE
Cottonwood tree IgE
Elm tree IgE
Mountain cedar (juniper) IgE
Mulberry tree IgE
Oak tree IgE
Olive tree IgE
Short (common) ragweed IgE
Mugwort IgE
Russian thistle IgE
Russian thistle IgE
Pigweed IgE
Sheep sorrel (yellow dock) IgE

RDPASW REGION 12 ARID SOUTHWEST (S. AZ, SE CA DESERT)

VOLUME 3 MI

MINIMUM 1.5 mL

D. pteronyssinus (mite) IgE

REGIONAL RESPIRATORY PROFILES

D. farinae (mite) IgE
Cat dander IgE
Dog dander IgE
Bermuda grass IgE
Johnson grass IgE
Perennial rye grass IgE
Cockroach IgE
Penicillium chrysogenum/notatum IgE
Cladosporium herbarum IgE
Aspergillus fumigatus IgE
Alternaria tenuis IgE
Acacia tree IgE
Cottonwood tree IgE
Elm tree IgE
Mountain cedar (juniper) IgE
Oak tree IgE
Olive tree IgE
Short (common) ragweed IgE
Mugwort IgE
Russian thistle IgE
Pigweed IgE

RDPSCC REGION 13 SOUTH COASTAL CALIFORNIA (CA)

VOLUME 3 MI
MINIMUM 1.5 mL

D. pteronyssinus (mite) IgE
D. farinae (mite) IgE
Cat dander IgE
Dog dander IgE
Bermuda grass IgE
Timothy grass IgE
Cockroach IgE
Penicillium chrysogenum/notatum IgE
Cladosporium herbarum IgE
Aspergillus fumigatus IgE
Alternaria tenuis IgE
Grey alder IgE
Common silver birch tree IgE
Elm tree IgE
Maple leaf sycamore tree IgE
Mountain cedar (juniper) IgE
Mulberry tree IgE
Oak tree IgE
Olive tree IgE
Short (common) ragweed IgE
Mugwort IgE
Russian thistle IgE
Pigweed IgE
Sheep sorrel (yellow dock) IgE

RDPCC ALLERGENS, REGION 14, CENTRAL CALIFORNIA (CA)

MINIMUM 1.5 mL

D. pteronyssinus (mite) IgE
D. farinae (mite) IgE
Cat dander IgE
Dog dander IgE
Bermuda grass IgE
Timothy grass IgE
Cockroach IgE
Penicillium chrysogenum/notatum IgE
Cladosporium herbarum IgE
Aspergillus fumigatus IgE
Alternaria tenuis IgE
Grey alder IgE
Common silver birch tree IgE
Elm tree IgE
Maple leaf sycamore tree IgE

REGIONAL RESPIRATORY PROFILES

Mountain cedar (juniper) IgE
Mulberry tree IgE
Oak tree IgE
Olive tree IgE
Short (common) ragweed IgE
Mugwort IgE
Russian thistle IgE
Pigweed IgE

RDPIMW REGION 15, INTERMOUNTAIN WEST (SOUTH ID, NV)

VOLUME 3 MI
MINIMUM 1.5 mL

D. pteronyssinus (mite) IgE
D. farinae (mite) IgE
Cat dander IgE
Dog dander IgE
Bermuda grass IgE
Timothy grass IgE
Cockroach IgE
Penicillium chrysogenum/notatum IgE
Cladosporium herbarum IgE
Aspergillus fumigatus IgE
Alternaria tenuis IgE
Box elder tree IgE
Cottonwood tree IgE
Elm tree IgE
Mountain cedar (juniper) IgE
Mulberry tree IgE
Oak tree IgE
Olive tree IgE
Short (common) ragweed IgE
Mugwort IgE
Russian thistle IgE
Pigweed IgE

RDPINW REGION 16, INLAND NORTHWEST (CENTRAL & EASTERN WA, OR)

VOLUME 3 MI
MINIMUM 1.5 mL

D. pteronyssinus (mite) IgE
D. farinae (mite) IgE
Cat dander IgE
Dog dander IgE
Timothy grass IgE
Cockroach IgE
Penicillium chrysogenum/notatum IgE
Cladosporium herbarum IgE
Aspergillus fumigatus IgE
Alternaria tenuis IgE
Grey alder tree IgE
Box elder tree IgE
Allergen Common silver birch tree IgE
Cottonwood tree IgE
Elm tree IgE
Mountain cedar (juniper) IgE
Oak tree IgE
Mugwort IgE
Russian thistle IgE
Pigweed IgE
Sheep Sorrel (yellow dock) IgE

REGIONAL RESPIRATORY PROFILES

RDPCPN REGION 17 PACIFIC NORTHWEST (NW CA, WESTERN WA, OR)

VOLUME 3 MI

MINIMUM 1.5 mL

D. pteronyssinus (mite) IgE
D. farinae (mite) IgE
Cat dander IgE
Dog dander IgE
Timothy grass IgE
Cockroach IgE
Penicillium chrysogenum/notatum IgE
Cladosporium herbarum IgE
Aspergillus fumigatus IgE
Alternaria tenuis IgE
Grey alder tree IgE
Box elder tree IgE
Allergen Common silver birch tree IgE
Cottonwood tree IgE
Elm tree IgE
Mountain cedar (juniper) IgE
Oak tree IgE
Walnut tree IgE
White ash tree IgE
Short (common) ragweed IgE
Pigweed IgE
Sheep Sorrel (yellow dock) IgE
Nettle IgE

RDPK REGION 18 ALASKA (AK)

VOLUME 3 MI

MINIMUM 1.5 mL

D. pteronyssinus (mite) IgE
D. farinae (mite) IgE
Cat dander IgE
Dog dander IgE
Timothy grass IgE
Cockroach IgE
Penicillium chrysogenum/notatum IgE
Cladosporium herbarum IgE
Aspergillus fumigatus IgE
Alternaria tenuis IgE
Grey alder tree IgE
Allergen Common silver birch tree IgE
Cottonwood tree IgE
Mugwort IgE
Sheep Sorrel (yellow dock) IgE



110 West Cliff Drive • Spokane, WA 99204
Toll-free: 855-758-0642 (509.755.8600)
www.paml.com

FOR MORE INFORMATION, PLEASE CONTACT
YOUR LOCAL MARKETING REPRESENTATIVE.